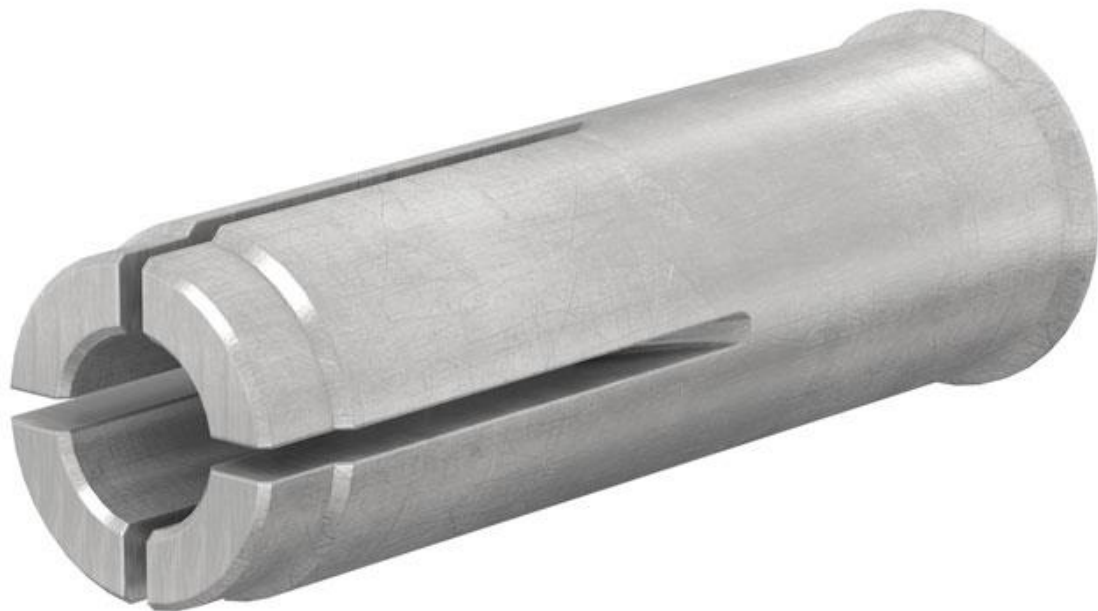




Declaration of Performance

Flamco AP Push-in Anchors

According Annex III of the CPR 305/2011
DoP No. MKT-232



Flamco B.V.

P.O. Box 502
3750 GM Bunschoten – The Netherlands

Amersfoortseweg 9
3751 LJ Bunschoten – The Netherlands
T +31 33 299 75 00
F +31 33 298 64 45
E info@flamcogroup.com

Date: 17 February 2017

Article code:

82000
82001
82002
82003



DECLARATION OF PERFORMANCE
DoP No. MKT-232 - en

1. Unique identification code of the product-type: **MKT Drop-in Anchor E / ES**
2. Type, batch or serial number or any other element allowing identification of the construction product as required pursuant to Article 11(4):

ETA-02/0020, Annex A3
Batch number: see packaging of the product

3. Intended use or uses of the construction product, in accordance with the applicable harmonised technical specification, as foreseen by the manufacturer:

generic type	deformation-controlled expansion anchor
for use in	non-cracked concrete C20/25 - C50/60 (EN 206)
option	7
loading	static or quasi-static
material	<p><u>zinc-plated steel:</u> dry internal conditions only covered sizes: E/ES M6x30, E/ES M8x30, E/ES M8x40, ES M10x30, E/ES M10x40, E/ES M12x50, E/ES M12x80, E/ES M16x65, E/ES M16x80, E M20x80</p> <p><u>stainless steel (marking A4):</u> internal and external use without particular aggressive conditions covered sizes: E/ES M6x30, E/ES M8x30, E/ES M8x40, E/ES M10x40, E/ES M12x50, E/ES M12x80, E/ES M16x65, E/ES M16x80, E M20x80</p> <p><u>high corrosion resistant steel (marking HCR):</u> internal and external use with particular aggressive conditions covered sizes: E/ES M6x30, E/ES M8x30, E/ES M8x40, E/ES M10x40, E/ES M12x50, E/ES M12x80, E/ES M16x65, E/ES M16x80, E M20x80</p>
temperature range (if applicable)	--

4. Name, registered trade name or registered trade mark and contact address of the manufacturer as required pursuant to Article 11(5):

MKT Metall-Kunststoff-Technik GmbH & Co. KG
Auf dem Immel 2
D - 67685 Weilerbach

5. Where applicable, name and contact address of the authorised representative whose mandate covers the tasks specified in Article 12(2): --
6. System or systems of assessment and verification of constancy of performance of the construction product as set out in Annex V: **System 1**
7. In case of the declaration of performance concerning a construction product covered by a harmonised standard: --



8. In case of the declaration of performance concerning a construction product for which a European Technical Assessment has been issued:

issued **Deutsches Institut für Bautechnik, Berlin**
 on the basis of **ETA-02/0020**
ETAG 001-4

The notified body 1343-CPR performed under system 1:

- (i) determination of the product type on the basis of type testing (including sampling), type calculation, tabulated values or descriptive documentation of the product;
- (ii) initial inspection of the manufacturing plant and of factory production control;
- (iii) continuous surveillance, assessment and evaluation of factory production control.

and issued: Certificate of constancy of performance 1343-CPR-M 550-2

9. Declared performance:

Essential Characteristics	Design Method	Performance	Harmonized Technical Specification
characteristic resistance for tension	ETAG 001, Annex C CEN/TS 1992-4	Annex C1-C2	ETAG 001
characteristic resistance for shear	ETAG 001, Annex C CEN/TS 1992-4	Annex C3-C4	
displacement for serviceability limit state	ETAG 001, Annex C CEN/TS 1992-4	Annex C5	

Where pursuant to Article 37 or 38 in the Specific Technical Documentation has been used, the requirements with which the product complies: --

10. The performance of the product identified in points 1 and 2 is in conformity with the declared performance in point 9. This declaration of performance is issued under the sole responsibility of the manufacturer identified in point 4.

Signed for and on behalf of the manufacturer by:


Lore Weustenhagen
 (General Manager)
 Weilerbach, 22.09.2015

i.V. 
Dipl.-Ing. Detlef Bigalke
 (Head of product development)

