

Simplex steel pipe adapter PLUS

Simplex

NEW



Registration number
DW-8511CR0167



The new generation – now also suitable for use with domestic water

- For heating and domestic water* with DVGW approval
- Highly stress-resistant thanks to Simplex compression adapter technology
- Suitable for concealed use
- For steel pipes in accordance with DIN EN 10255

Simplex steel pipe adapters PLUS

Artikle no. Version



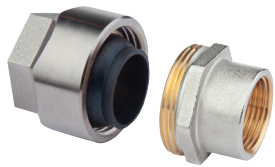
F13063

with Euro taper
Pipe 1/2" x G3/4m Euro taper



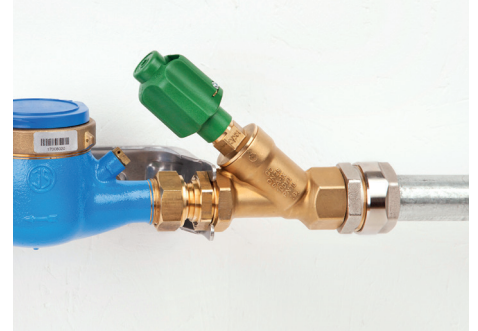
F13077
F13078
F13080
F13081
F13082

**with male thread, self-tightening
with special thread seal**
Pipe 3/8" x G1/2m
Pipe 1/2" x G1/2m
Pipe 3/4" x G3/4m
Pipe 1" x G1m
Pipe 1 1/4" x G1 1/4m



F13090
F13091
F13092
F13093
F13094

with female thread
Pipe 3/8" x G1/2f
Pipe 1/2" x G1/2f
Pipe 3/4" x G3/4f
Pipe 1" x G1f
Pipe 1 1/4" x G1 1/4f



Application in domestic water installations*
with galvanised DIN steel pipe



Application in heating installations
with DIN steel pipe

- ! Materials suitable for domestic water hygiene in accordance with the UBA (German Federal Environment Agency) recommendation
- ! Max. operating pressure: 10 bar
- ! Max. operating temp.: 110 °C permanent temperature, 130 °C short-term
- ! For steel pipes in accordance with DIN EN 10255



*DVGW (German Technical and Scientific Association for Gas and Water) certification as a brass clamp connector for galvanised steel pipes in accordance with DIN EN 10255 and DIN EN 10240 for use with cold water



No welding



No tapping