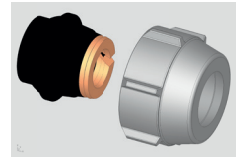


A1 Compression Adapter

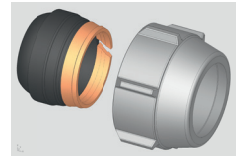
Applications

Heating systems



Suitable pipes

- Copper pipes (blank) according to DIN EN 1057 (soft, semi-hard, hard)
 - Carbon steel pipes (blank, galvanised) according to DIN EN 10305
- Nickel-plated and chrome-plated copper pipes are unsuitable!



Description

Elastic sealing compression adapter for copper and carbon steel pipes for G 3/4" male thread with Euro taper according to DIN EN 16313. Support sleeves are not required. Sealing element with optimum properties in terms of dimensional stability under heat and resistance to ageing.

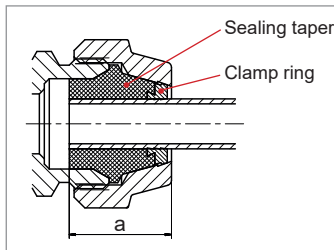


Fig. 1

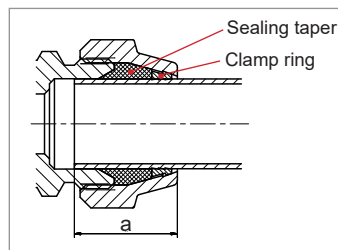


Fig. 2: Dimension 18 x 1

Installation instructions

- Cut pipe at right angles.
- De-burr the pipe before assembling.
- Mark the insertion depth $a = 20$ mm on the pipe.
- Connecting pipes must be vertical and/or horizontal to the screw fitting!
Align and fix pipes if necessary!
- Install with an AF 30 wrench
Tightening torque 40 Nm
- After tightening the nut, the marking on the pipe should be in the clamping area of the screw fitting or should only be slightly visible.
- The sealing taper and clamp ring should not be connected to each other with size 18 x 1.
Note the alignment when inserting the sealing taper (see Fig. 2).