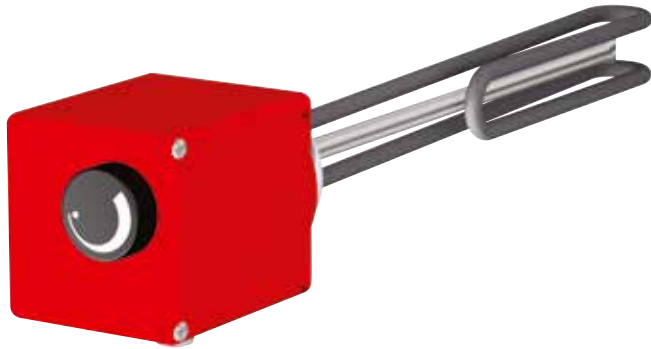




## Screw-in heaters



Depending on the surface tension, it is possible to use these elements to heat water, sea water, diluted acids and similar low-viscosity liquids up to 100 °C. Do not exceed a maximum operating pressure of 10 bar.

With the variable thermostat version the temperature can be set between 35 °C and 85 °C. The temperature limiter cuts in at a sensor temperature of 110 °C. The limiter is intrinsically safe. The limiter can be reset by removing the rubber stopper.

The limiter may not be reset until the cause of the problem has been identified and the system has been able to cool down.

The controls at the front of the housing allow more than one screw-in heater to be installed next to each other.

Other lengths and outputs are available on request (see table).

Additional accessories:

- Operating control display
- Centellen gasket
- Reducer G2" / G 1½", brass

### Standard configuration

Immersion depth mm	Output kW
320	1.50
320	2.00
390	2.50
390	3.00
430	3.80
470	4.50
620	6.00
720	7.50
780	9.00

### insulated Installation

There is no conducting connection between the heating elements and the vessel where insulated installation is concerned. Our heating elements are primarily constructed to be installed in enamelled pressure vessels in connection with a bleeder resistor. This has the benefit of significantly slowing the calcification of the heating elements and prevention of electro-chemical corrosion.

### Screw-in heaters

are particularly suited to direct heating of various fluids. They are produced as compact, fixed thermostat units with a housing, or with a housing incorporating a variable thermostat / limiter combination. The stainless-steel version provides enhanced operational safety and a long service life.

### Set-up

#### Screw-in heaters

are generally produced with 3 U-shaped heating elements (Ø 6.5 mm) which are attached to a plastic body. The bodies have G 1 ½" threads. The seal can be made with a gasket, PTFE tape or hemp.

The housing can be rotated to the position required by the customer after installation.



## Screw-in heaters

### Installation instructions

#### Screw-in heaters

are intended to be installed horizontally. The unheated zone of the electrical heater is 100 mm from the gasket surface. The length of the screw-in sleeve may not exceed 75 mm. If other installation positions are required, please consult the Flamco Technical Support.

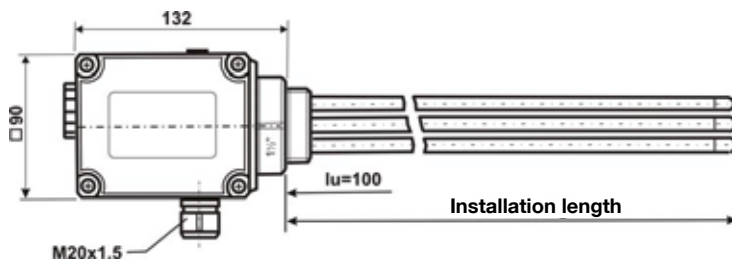
Please ensure that the heating elements are completely surrounded by the medium to be heated. Adequate provision must be made to isolate the screw-in heater from the electricity supply in the event that the element is not completely submersed in fluid.

When installing, use only SW60 spanners. The tightening torque must not exceed 100 Nm.

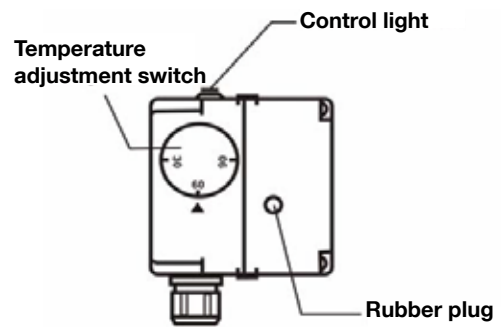
Use a locking nut in thin-walled vessels.

#### Screw-in heaters

must be installed by authorised specialist installers only.



Version 400V 3/PE AC 50Hz



Version 230V 1/N/PE AC 50Hz

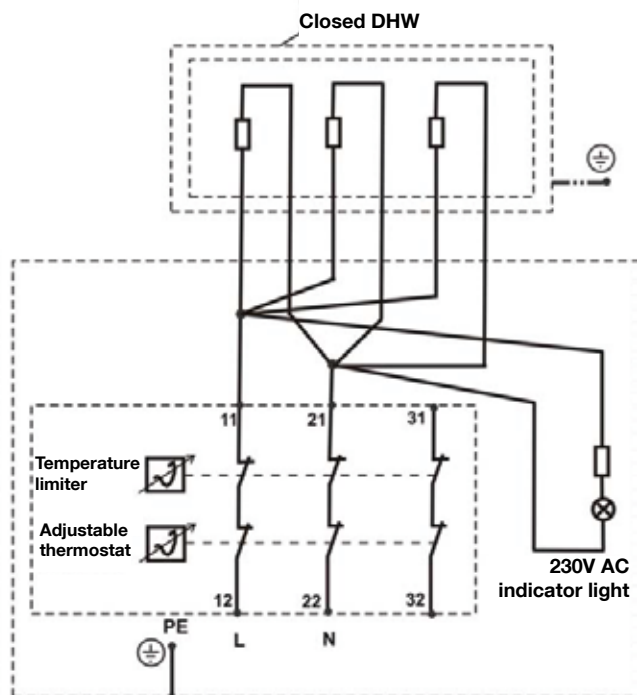
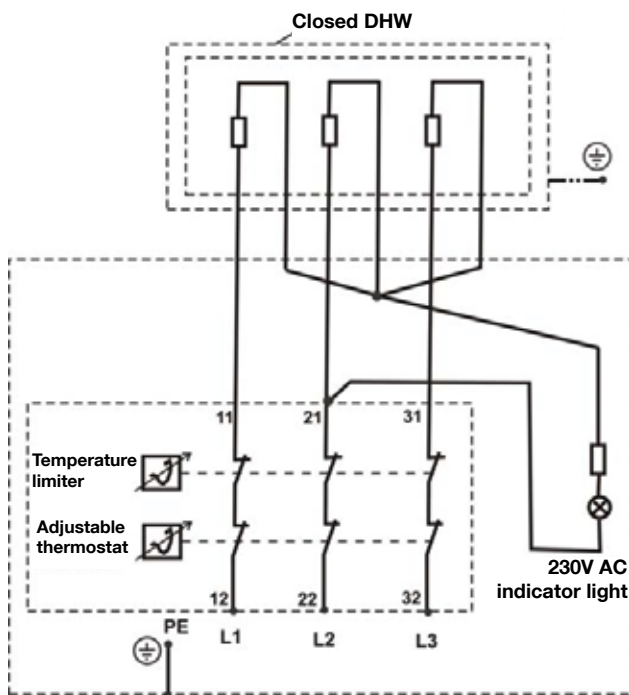


Diagram Screw-in heater