

1. General

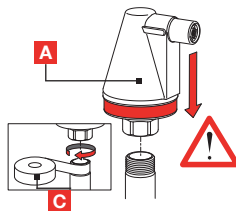
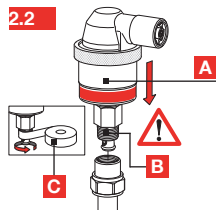
The packaging contains a Flexvent Top (A), and for the Flexvent Top 3/8" a shut-off valve for optional installation (B). The Flexvent Top removes free air bubbles that collect at the highest point, which is also where the Flexvent Top is fitted.

Application

- A Flexvent Top can be used in heating and cooling/chilled systems with glycol-based additives (max. 50%).
-  The Flexvent Top is not suitable for closed potable water systems and steam systems.

Safety


- Install the Flexvent Top in a frost-free location and in an easily accessible place for maintenance.
- Do not insulate the Flexvent Top.



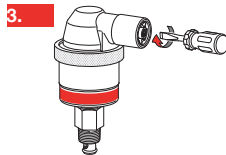
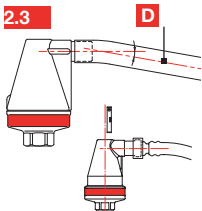
2. Installation

Safety requirements during installation

- Min. / max. system pressure: 3 Psi / 145 Psi
- Min. / max. system temperature: 14 °F (with glycol) / +248 °F.

 Make sure installation is carried out by qualified personnel only. Observe local legislation and guidelines.

- Flush all debris from the system adequately before the installation of the Flexvent Top.
- For optimal performance, the Flexvent Top should be installed in a horizontal pipe at the highest point of the system. Installation on a rising main is not recommended (2.1).
- Use sealing tape (C) on the Flexvent Top (A), or on the shut-off valve (B).
- The outlet of the Flexvent Top has a 3/8" connection for a drain (D).



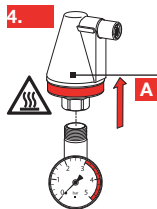
3. Maintenance and service

Regularly inspect the valve (at least once per year). The Flexvent Top can be closed off by turning the screw in the outlet clockwise.

 Flamco




**Flexvent
Top**



4. Dismantling

Carry out maintenance only when system is cold.

 Depressurise the system (only for types without shut-off valve). Risk of scalding! Hot water can flow out of the system. Remove the Flexvent Top (A) from the shut-off valve (B), or remove the vent (A) from the system.

Environment

 Comply with local regulations when disposing of the product.

See also www.flamcogroup.com

